



Membership Packet

We are so glad that you are interested in becoming a member of BeFree Alton!

Membership is open to anyone who receives Jesus as their Lord and Savior, has received God's free grace through faith in Jesus Christ, is seeking to live out his commands to love God, love others, and make disciples, and has been baptized out of obedience to Christ.

When we become members of a local church, we are making a commitment to partner with a local body of believers for the purpose of loving, serving, and encouraging one another, through holding one another accountable, worshiping God together and engaging together in mission as we proclaim the Gospel to our communities, so that the glory of God might shine in and through us for the world to see. We encourage anyone who calls BeFree Alton their church home, who gathers regularly to worship with us on Sunday mornings, and who scatters with us into our community throughout the week to make a commitment to join with our church family as we pursue Christ together for the glory of God.

Here's a quick look at how the membership process works at BeFree Alton:

- [Class #1 | About BeFree Alton](#) - In our first class, we will share a little about the story of our church and our mission. This is a great time to come with any questions you might have about how we are, how we do things and where we are going as a family.
- [Class #2 | What We Believe](#) - In our second class, we will talk through our church's statement of faith making sure you can affirm what we believe and answering any questions you may have. This is a great opportunity to ask us questions about our church's stance on debated matters of faith.
- [Membership one to one](#) - After the class, one of the elders will meet together with you one on one in order that we might get to know you a little better and consider what it looks like to help you connect to the life and mission of our church.

Everyone who has accepted Christ as their savior, can affirm our statement of faith, has been baptized, and has walked through the membership process will be accepted into membership at BeFree. The elders will then meet to finalize your membership. We cannot wait to get to know you better and to follow Christ with you side by side in the years to come.

Why Membership?

Membership: Biblical & Beautiful

When we submit to Christ and become his disciples, we do not simply gain a relationship with the Lord, but with his family. In other words, to become a Christian is to become a part of the church; the very family of God. This family consists of brothers and sisters from every tribe, tongue and nation; people who are one universal family but who are geographically bound into various localities across the globe. Each local church is a unique incarnation of the universal family of God. *The church is not a business or service provider, a club of people with a shared interest or a place to consume religious services; it's a family united by their shared love and devotion to Jesus Christ.*¹

What is Church membership?

Membership is a commitment by which Christians join together within a local body of believers for the purpose of worship, teaching, mission, mutual encouragement, support, and accountability. This membership is not like being a "member" to Sam's Club but more like how the arm is a "member" of the body. By becoming a member of a local church body, we publicly commit to live our lives together with the local family of God by loving one another (Romans 12:10; John 13:34, Ephesians 4:2), rejoicing and mourning with one another (Romans 12:15), encouraging and building one another up (1 Thessalonians 5:11), admonishing one another (Colossians 3:16), serving one another (Galatians 5:13), forgiving one another (Colossians 3:13), using our gifts to support one another (Ephesians 4:16), holding one another accountable (James 5:16), regularly meeting together (Hebrews 10:25a), spurring one another on to godly living (Hebrews 10:24), fighting for one another's spiritual maturity (Ephesians 4:13) and working alongside one another in Gospel mission (John 20:21). In church membership, we make a commitment to live alongside one another in these ways for our own good as well as the good and maturity of the other members of the church family for the building up of the church until Christ returns. (1 Corinthians 12:12-31; Ephesians 5)

What does the Bible say about membership?

Though church membership is not explicitly mentioned in Scripture, God's word strongly implies the existence of something very much like membership in the early church community. Let's consider three distinct elements of membership that we believe indicate it is biblically faithful:

1. *Scripture shows us that the church is made up of a clearly defined body of believers.*

We read in 1 Corinthians 5:1-2 of an instance in which Paul tells the church in Corinth to remove from among them a man who has been found in continual unrepentant sin. The command to "remove him" implies that there was a clear understanding of who was in the community of believers and who was not.² We see this again with a similar teaching from Jesus in Matthew 18:15-20. In this passage, Jesus calls believers to bring a matter of church

¹ Furthermore, we agree with this declaration of membership from the multisite website, "... membership is not about pinning you down—it's about building you up and sending you out. It's a declaration of being all-in to follow Jesus with this family of faith and allowing them to disciple and commission you to live the way of Christ to your family, to your neighborhood, in your area, and around the world.

² This clear line of who is in the community and who was not does not imply that we should avoid contact with those outside the church community or withdraw our love from them, to the contrary, we should press into relationships with those outside our church, engaging in the larger universal community of believers, and sharing the love of Christ with those who have not come to a saving knowledge of the Lord Jesus Christ.

discipline “before the church.” By this It seems that Jesus means us to have a clear understanding of who “the church” entails. These two matters of church discipline imply that there was a clear understanding of who was in the church and who was not. *Church membership helps draw the line clearly so that we can approach such matters properly.*

2. Scripture shows us that these believers should be deeply involved in each other’s lives for mutual encouragement and accountability.

Scripture shows us that the church is a body of believers who commit to work for mutual service, encouragement, and accountability. This requires a serious and joyful investment and sacrifice in one another’s lives, and a commitment to one another’s spiritual growth. We see this in passages like 1 John 3:16, where the apostle John writes, “By this we know love, that he laid down his life for us, and we ought to lay down our lives for the brothers.” We see this again in Hebrews 3:13 which tells us to, “exhort one another every day, as long as it is called “today,” that none of you may be hardened by the deceitfulness of sin.” In Church membership, we make a commitment to join with a local body of believers for the purpose of mutual encouragement and accountability. *In membership we make explicit our commitment to encourage and be encouraged, hold others accountable and be held accountable. What a beautiful picture of our union in Christ!*

3. Scripture shows us that believers should willingly submit to godly elders and that elders should lovingly shepherd their flock.

The New Testament clearly teaches that believers ought to submit to those God has called to lead as those leaders submit to the leadership of the Lord (Acts 20:28). These leaders will be called to “give account” for how they care for the flock that God has given them (Hebrews 13:17). Elders are not responsible to shepherd all Christians everywhere, but only those who are “among you” (1 Peter 5:2). In order for these church leaders to carry out their task faithfully, they must know who is in their flock. *Through membership the leaders of the local church are enabled to know clearly who the Lord has entrusted to them for the task of oversight and shepherding.*

Conclusion

We believe that membership is a biblically faithful way for all believers to attach themselves to a clearly defined local church body for the purpose of mutual encouragement, accountability and shepherding by Godly leaders,

Membership according to our church bylaws:

2.1. New Members - Individuals meeting the requirements for membership may be accepted into membership by a majority vote of members present at the annual business meeting. Additionally, Pastors and Elders at each BeFree location may establish policies and procedures for bringing people into membership without requiring a vote at a business meeting. Such procedures may include the use of membership classes, applications, public faith stories, and other means as deemed appropriate by the Elders.

2.2. Responsibilities of Members - It is expected of every member to be a minister for Jesus Christ in the following ways:

- Regular active participation in the life of the church, including Sunday worship. (Hebrews 10:24; Rom 12)
- Employing their spiritual gifts and talents for mutual edification and community outreach. (Romans 12; I Corinthians 12; I Peter 4:10 - 11)
- Systematic giving to the financial needs of the church. (I Corinthians 9:1 - 18; II Corinthians 9:6 - 12)
- Daily living a consistent life as a follower of Jesus Christ. (Matthew 5:13 - 16; Matthew 22:37 - 40)
- Promoting unity in the body by communicating in truth and love, and settling all differences with one another in humility and in accordance with the Scriptures. (Romans 12:5; John 17:21; Galatians 6:1 - 2)

2.3. Removal from Membership - A member may be dismissed from church membership by two-thirds majority vote of those present at a church business meeting. Additionally, any member who no longer fulfills the responsibilities of membership shall become the object of loving and kind exhortation by the Pastor(s) and Elders (Matthew 18:12 - 20). This effort shall continue for as long as the Elders deem appropriate. A member who is unresponsive may be removed from membership at the discretion of, and by majority vote of the Elders.

About the BeFree Multisite

Our Story

After a number of men and women came to faith at a Billy Graham Crusade, several families decided to start the Barrington Community Church in 1952. In 1954, a hurricane toppled trees all over the area, which provided a free supply of wood for the construction of a building. This group soon affiliated with the Evangelical Free Church of America (EFCA) and became the Barrington Evangelical Free Church (BeFree). The church grew and expanded its footprint. In 1993, Chris Clinch became Senior Pastor.

In 2002, God directed us to an opportunity in the crossroads community of Alton, NH, strategically located as the gateway to the Lakes region, only 30 miles from the state capitol, and with 30,000 people living within a 20-mile radius. Sam Huggard and a handful of key families put down roots, a core group was established in 2005, and public worship gatherings began in 2006. Over the years, God has blessed BeFree Alton as a growing witness for Christ in Alton and lead the multisite to plant two more churches, one in Dover (2009) and the other in Somersworth (2017). In 2016, Sam transitioned to become the District Superintendent of EFCA churches for New England. In July of 2017, Ben Ruhl was called to become BeFree Alton Lead Pastor.

The BeFree Multi-site: How it Works

"Multi-site" can be a confusing word as many people use it differently. At BeFree, when we speak of the multisite, we mean that we are a network of four interdependent churches. Each church campus maintains local ownership, but still maintains mutual accountability across the campuses. Here's a clearer picture of what our interconnectedness practically looks like:

We Share Common Vision and Values - While each campus contextualizes these vision & values to their specific location, we all unite underneath the following:

- **Our Multisite Vision** - BeFree Community Church is a partnership of interdependent local churches dedicated to advance the Good News of Jesus Christ through a shared vision of making disciples, mentoring leaders, and developing new churches.
- **Our Multisite Values**- This vision is built upon a few key values which we all share:
 - o **Interdependence** - Here are four ways we stay mutually accountable while preserving local ownership. 1) We share a common legal, financial, and governing structure which better allows us to accomplish our common purpose. 2) We share some of our resources, including a common missions budget and the resources to provide certain pastoral benefits. 3) Our pastors enjoy a relationship that fosters mutual devotion to Christ and a camaraderie in which we encourage, challenge, and support each other. 4) We partner in mentoring and training new leaders.
 - o **Residential** - Each campus has its own flavor and its own unique way of carrying out their mission. Each campus intentionally lives and involves themselves in their local communities as the normal flow of life. Thus, each church contextualizes its ministry to its own location with its own local leadership, local preaching and local ministries.
 - o **Gathered & Scattered** - This is the rhythm of our churches. In each BeFree Community, we gather on Sundays to worship God together, to celebrate all that he's done and is doing, to be

equipped for growth in Christ through biblical teaching, and to provide a forum in which the surprising grace of the gospel is publicly made known. We scatter during the rest of the week as those who've been sent on mission into our various areas of influence (homes, neighborhoods, workplaces, community organizations, kids' teams and clubs, etc.).

- **Mentored** - Jesus was a model of obedience to God in relating with others. He called people into a mentored way of life. A core value at BeFree is the development of every member toward their potential, and the development of servant leaders toward their ministry potential. We further practice this mentored way of life in training new pastors to establish new churches.

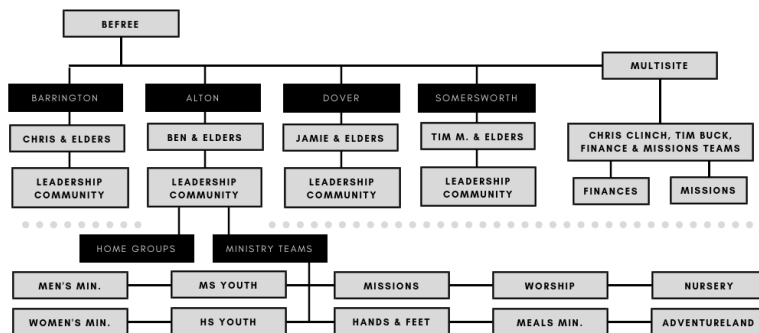
Multi-site Leadership

BeFree is a pastor-led, elder-governed, member-empowered church. Thus, leadership at BeFree is a relationship of mutual submission and respect. Members elect pastors and elders, and voluntarily follow their lead. This affirms the Biblical principle that God raises up leaders to equip His Church for ministry.

“¹¹ And he gave the apostles, the prophets, the evangelists, the shepherds and teachers, ¹² to equip the saints for the work of ministry, for building up the body of Christ, ¹³ until we all attain to the unity of the faith and of the knowledge of the Son of God, to mature manhood, to the measure of the stature of the fullness of Christ” - Ephesians 4:11-13

- **Multisite Support** - the leaders of the multisite (pastors) meet regularly for prayer, support and accountability. While this group certainly discusses leadership decisions at each other’s campuses, each campus makes the final call on all matters of local leadership and ministry.
- **Local Leaders** - Each BeFree campus has its own pastor(s) and elder board that have been elected by the local congregation. Each campus also has its own Leadership Community, comprised of Elders, home group leaders and ministry team leaders, who meet for mutual equipping and encouragement.
- **Every Member Ministry** - We do not believe that the work of “ministry” is reserved only for those in leadership positions, rather, every Christ-follower who is seeking to obey the command to Love God, Love Others, and Make Disciples is responsible to share in the work of ministry. BeFree members are called and gifted by God, empowered by the Holy Spirit, trained and equipped by leaders, and unleashed to meet the needs of others inside and outside of the church in the name of Jesus Christ. Though a person must be a member to lead a ministry team, all are welcome to serve on ministry teams as determined by Pastors, Elders, and Team Leaders.

Here’s a visual breakdown of the multisite leadership structure with special attention given to the Alton campus:



The Mission of BeFree Alton:

We are a Christ-centered family, that glorifies God by loving him, loving others and making disciples.

Who we are - We Are a Christ-Centered Family

The person and work of Jesus Christ (ie. the Gospel) is the central truth that unites, guides and empowers everything we do and believe as a church. By faith in Jesus Christ's finished work, he has set us free from bondage to sin and adopted us into the family of God. Now we can relate to God as our father and to one another as brothers and sisters.

What we do - We Seek to Glorify God

The ultimate goal of everything our church family does is to give God the honor and glory he deserves. We don't do this reluctantly, nor merely out of a sense of obligation. Rather, it is our deepest delight to declare and display him in all we do!

How we do it - By Loving Him, Loving Others and Making Disciples

We seek to live for Jesus by taking the words of the great commandment (Matt. 22:36-40) and the great commission (Matt 28:18-20) seriously. We obey these two passages by loving God, loving others and making disciples.

- Love God - We grow in our love for God by seeking and savoring him. We seek him primarily through the study of his Word, and savor him by responding in worship. The more we seek him, the more we'll find to savor. The more of him we find to savor, the more we will want to seek.
- Love Others - We practice our love for others by building meaningful relationships with one another and taking responsibility for one another's good and growth. The deeper our relationships grow, the more we will take responsibility for one another. The more we take responsibility for one another, the deeper our relationships will grow.
- Make Disciples - We seek to fulfill the great commission (Matt 28:18-20) by making new disciples through mission and outreach, maturing disciples through intentional discipleship, and multiplying disciples by equipping one another to share in God's mission together.

What We Believe

BeFree is part of the Evangelical Free church of America (EFCA), a denomination that "exists to glorify God by multiplying transformational churches among all people." We have adopted the doctrinal statement of our denomination as our own. Please take some time to thoughtfully read this page. We would love to discuss any questions you have.

- **God** - We believe in one God, Creator of all things, holy, infinitely perfect, and eternally existing in a loving unity of three equally divine Persons: the Father, the Son and the Holy Spirit. Having limitless knowledge and sovereign power, God has graciously purposed from eternity to redeem a people for Himself and to make all things new for His own glory.
- **The Bible** - We believe that God has spoken in the Scriptures, both Old and New Testaments, through the words of human authors. As the verbally inspired Word of God, the Bible is without error in the original writings, the complete revelation of His will for salvation, and the ultimate authority by which every realm of human knowledge and endeavor should be judged. Therefore, it is to be believed in all that it teaches, obeyed in all that it requires, and trusted in all that it promises.
- **The Human Condition** - We believe that God created Adam and Eve in His image, but they sinned when tempted by Satan. In union with Adam, human beings are sinners by nature and by choice, alienated from God, and under His wrath. Only through God's saving work in Jesus Christ can we be rescued, reconciled and renewed.
- **Jesus Christ** - We believe that Jesus Christ is God incarnate, fully God and fully man, one Person in two natures. Jesus –Israel's promised Messiah–was conceived through the Holy Spirit and born of the virgin Mary. He lived a sinless life, was crucified under Pontius Pilate, arose bodily from the dead, ascended into heaven and sits at the right hand of God the Father as our High Priest and Advocate.
- **The Work of Christ** - We believe that Jesus Christ, as our representative and substitute, shed His blood on the cross as the perfect, all-sufficient sacrifice for our sins. His atoning death and victorious resurrection constitute the only ground for salvation.
- **The Holy Spirit** - We believe that the Holy Spirit, in all that He does, glorifies the Lord Jesus Christ. He convicts the world of its guilt. He regenerates sinners, and in Him they are baptized into union with Christ and adopted as heirs in the family of God. He also indwells, illuminates, guides, equips and empowers believers for Christ-like living and service.
- **The Church** - We believe that the true church comprises all who have been justified by God's grace through faith alone in Christ alone. They are united by the Holy Spirit in the body of Christ, of which He is the Head. The true church is manifest in local churches, whose membership should be composed only of believers. The Lord Jesus mandated two ordinances, baptism and the Lord's Supper, which visibly and tangibly express the gospel. Though they are not the means of salvation, when celebrated by the church in genuine faith, these ordinances confirm and nourish the believer.
- **Christian Living** - We believe that God's justifying grace must not be separated from His sanctifying power and purpose. God commands us to love Him supremely and others sacrificially, and to live out our

faith with care for one another, compassion toward the poor and justice for the oppressed. With God's Word, the Spirit's power, and fervent prayer in Christ's name, we are to combat the spiritual forces of evil. In obedience to Christ's commission, we are to make disciples among all people, always bearing witness to the gospel in word and deed.

- **Christ's Return** - We believe in the personal, bodily and glorious return of our Lord Jesus Christ. The coming of Christ, at a time known only to God, demands constant expectancy and, as our blessed hope, motivates the believer to godly living, sacrificial service and energetic mission.
- **Response and Eternal Destiny** - We believe that God commands everyone everywhere to believe the gospel by turning to Him in repentance and receiving the Lord Jesus Christ. We believe that God will raise the dead bodily and judge the world, assigning the unbeliever to condemnation and eternal conscious punishment and the believer to eternal blessedness and joy with the Lord in the new heaven and the new earth, to the praise of His glorious grace. Amen.

Questions?

Our statement is intentionally broad in order to focus upon the essential doctrines of the faith. However, you might have questions regarding our church's stance on any number of other matters of life and doctrine. Perhaps you wonder our stance on baptism, creation, eschatology, women ordination, gender, sexuality, racial tensions, abortion, or any other one of the endless list of topics discussed and debated among Christians. We're glad you're wondering! We would love to get together with you to talk through any questions you might have.

One-on-One Membership Meeting

About you

Now that you've learned about our church, we would love to learn more about you. Don't worry, this isn't a test that you can pass or fail, rather, these are conversation starters so that we can learn more about where you are in your walk with Christ as we follow him together.

- **Story** - Tell us your story so far.
 - o What is the Gospel and how does it shape your life?
 - o How can we help you connect with the life of our church?
(See the "Connecting & Growing with the BeFree Family" section below)

- **Growth** - How is Jesus growing you today?
 - o How does Jesus want to grow you? (ie. your next step of growth/maturity)
 - o How can we help you take your "next step of growth?"
(See the "Connecting & Growing with the BeFree Family" section below)

- **Mission** - How is Jesus using you today?
 - o Where is Jesus calling you? (ie. your next step of mission)
 - o How might you partner with BeFree as we seek to make disciples together?
(See the "Serving & Going with the BeFree Family" section below)

Connecting & Growing with the BeFree Family

Home groups - Home groups at BeFree are the main way we connect to one another in life-on-life relationship outside our Sunday worship gathering.

- **DEEP DISCIPLESHIP** - *Home Groups at BeFree are a context where discipleship is nurtured* - The primary goal of home groups is to nurture a deeper love for God, love for others, and a passion for making disciples.
- **CLOSE RELATIONSHIP** - *Home Groups at BeFree are how we seek to build and maintain relationships* - Deep and lasting relationships are not built by sitting near one another on Sunday morning, but by regularly and intentionally spending time together. Home groups are intimate contexts that lend themselves to deep, lasting and Christ centered relationship. We believe that this makes them the best way for someone to connect to the life of our church
- **INTENTIONAL CARE** - *Home Groups at BeFree are the best way we have to care for one another* - We believe that a close relationship with someone will naturally include taking responsibility for someone. This means that home groups are the best place for the spiritual, tangible, emotional needs of our church to be identified and met and make sure that no one falls through the cracks. That's how families work!

2022-2023 Home Groups:

Mike & Julie Way - Sunday; Weekly @ 12:00pm - mikewaybrm@gmail.com
Greeley Tuesdays; Weekly @ 6:30pm - chaz@d-d-x.com
Ruhls & Nielsens - Thursdays; Weekly @ 6:30pm - bwruhl@gmail.com
Lucht & Buttons- Wednesdays; Weekly @ 6:30pm - jdlucht63@gmail.com
Smiths & Riders - Thursdays; Weekly @ 6:00pm - andy.smith.northern@comcast.net

Discipleship Ministries - Our discipleship ministries seek to offer a variety of opportunities for our family to grow closer to Christ and one another. You are welcome to reach out to the leaders of our ministries with any questions you have.

- Men's Ministry - Our men's ministry seeks to encourage men to build relationships with God and one another by offering multiple types of gatherings, from skeet shoots to one-to-one discipleship. Please contact Rob O'Blenis for more details: dobbernh@gmail.com
- Women's Ministry - Our women's ministry seeks to give women an opportunity to connect with one another and Jesus through the study of God's word as well as through occasional events. Please contact Charla DeJager for more details: johnchardj@gmail.com
- Youth Ministry - The BeFree Alton youth group meets at 6:00 pm on the 1st & 3rd Fridays of each month at Alton Bay Christian Conference Center during the school year. Please contact Leanne Boles for more information: leanneboles356@gmail.com
- Adventureland (Kids Ministry) - Adventureland is available for kids ages 4 - 5th grades during the teaching portion of our worship gathering. Please contact Adina Nielsen for more information: anielsen546@gmail.com

Serving & Going with the BeFree Family

By serving together with others on a ministry team, your relationships become kingdom partnerships. You will be surprised at how laboring together with our church family will help you sink your roots still deeper into our community.

- Worship Team - If you play an instrument or sing and would like to use your gifts to help lead worship, we would love to talk with you! Please reach out to Josh Button: anythingbutmyname@gmail.com
- Tech. Team - Our tech team is responsible for setting up and managing our audio, video and slides for Sunday Service. No experience is necessary to serve on this team. If you're willing to learn and serve with us, please contact Dan Rider: rangerider15@yahoo.com
- Youth, Kids and Nursery - Our kids are not the church of tomorrow but the church of today. Will you join us in raising up the next generation? If so, please contact:
 - Youth Group: Leanne Boles (grades 6-12) - leanneboles356@gmail.com
 - Adventureland: Adina Nielsen (age 4-5th grade) - anielsen546@gmail.com
 - Nursery: Olivia Ruhl (ages 0-3; women only) - ruhl.olivia@gmail.com
- Hands & Feet Team - This team coordinates hands-on opportunities for our church family to practically serve the community. Whether we're building a wheelchair ramp or giving someone a ride to the doctor's office, if you would like to serve others when new opportunities arise, please contact Joe Andersen: joe.andersen1@gmail.com
- Meals Team - This team provides meals for those inside and outside the church who are walking through difficult seasons. If you'd like to serve when needs arise, please contact Cherie Greeley: cherie@d-d-x.com
- Hospitality Team - This team sets up and takes down the Sunday morning worship service, along with providing snacks and beverages for our worship and fellowship time. If you would like to serve on this ministry team please contact Gerrie Moriarty: gerriemoriart@gmail.com

BeFree Alton Leaders & Contact Information

Elders - BeFree is an elder-lead, member-empowered church. Thus, leadership at BeFree is a relationship of mutual submission and respect. The members elect the elders, and voluntarily follow their leadership. Please feel free to reach out to our elders directly concerning anything from prayer and pastoral care to doctrine and church culture:

- | | | |
|---------------------|----------------|---------------------------------|
| • Ben Ruhl (pastor) | (603) 832-3131 | bwruhl@gmail.com |
| • Chris Kane | (262) 412-4720 | cthomaskane3@gmail.com |
| • Tim Nielsen | (410) 920-6793 | tim@christiancamps.net |
| • Andy Smith | (603) 568-4258 | andy.smith.northern@comcast.net |

Admin - Our admin works behind the scenes to make sure everything is working properly at our church. If you have any questions about anything from Sunday morning to website content, please reach out to her here:

- Gerrie Moriarty - gerriemoriart@gmail.com

Ministry Team Leaders

Ministry	Leader	Contact
• <i>Men's Ministry</i>	Rob O'Blenis	dobbernh@gmail.com
• <i>Women's Ministry</i>	Charla DeJager	johnchardj@gmail.com
• <i>Youth Group</i>	Leanne Boles	leanneboles356@gmail.com
• <i>Adventureland</i>	Adina Nielsen	anielsen546@gmail.com
• <i>Nursery</i>	Olivia Ruhl	ruhl.olivia@gmail.com
• <i>Worship Team</i>	Josh Button	anythingbutmyname@gmail.com
• <i>Tech. Team</i>	Dan Rider	rangerider15@yahoo.com
• <i>Hands & Feet Team</i>	Joe Andersen	joe.andersen1@gmail.com
• <i>Meals Team</i>	Cherie Greeley	cherie@d-d-x.com
• <i>Hospitality Team</i>	Gerrie Moriarty	gerriemoriart@gmail.com

Church Contact Information:

- **Phone:** (603) 832-3131
- **Email:** befreealton@icloud.com
- **Website:** <https://befree.church/alton>

Church Addresses:

- **Church Office:** 137 Main Street Alton, NH 03809
- **Church Mailing:** P.O. Box 1013 Alton, NH 03809
- **Worship Gatherings:** 242 Suncook Valley Road Alton, NH 03809